

Distinctive™ Squalane Butter 45

Natural Defense for Skin & Hair



Distinctive™ Squalane Butter 45

INCI: Squalane (and) Caprylic/Capric Triglyceride (and) Behenyl Behenate (and) Tribehenin

CAS #: 111-01-3, 73398-61-5, 17671-27-1, 18641-57-1

EC #: 203-825-6, 277-452-2, 241-646-5, 242-471-7

Luxurious Skin Feel

Melts Near Body Temperature

Squalane to Mimic Skin Components

Moisturizing & Film Forming

Reduces Trans-Epidermal Water Loss

Protection from Environmental Aggressors

Recommended applications



Skin Care



Color Cosmetics



Hair Care



Distinctive™ Squalane Butter 45 is a soft butter derived from 100% renewable, plant based emollients.

Rich in vegetable derived Squalane, this creamy butter provides hydration and moisturization to the skin and scalp. Squalane is well recognized to treat dry irritated skin, improve skin texture and provide anti-aging benefits by reducing the appearance of fine lines and wrinkles.

Distinctive™ Squalane Butter 45 melts near skin temperature to provide a soft luxurious skin feel and a light protective film. Containing 45% stabilized plant derived Squalane, Distinctive™ Squalane Butter 45 mimics the skin's natural lipid chemistry replacing lost skin components to protect against environmental aggressors and reduce trans-epidermal water loss. Improving the overall condition of the skin including skin softness & texture, moisturization and elasticity. Distinctive™ Squalane Butter 45 provides all of the benefits of Squalane plus film-forming on the skin to protect the skin from environmental factors.

 Vantage

Distinctive™ Squalane Butter 45

Natural Defense for Skin & Hair

Appearance	White wax, TMS
Melting Point	> 35°C
Recommended Use Level	1-10%
Shelf life	2 years
Regulatory	Listed on PCPC, IECSC, China IECIC 2015 ISO16128: 100%

Natural squalene-based composition

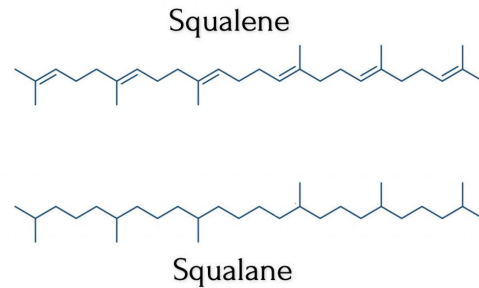
Squalene can be found abundantly in plants such as olives and in humans. It is an essential triterpene in the biosynthesis of phytosterol in plants. In humans, squalene one of the main skin lipids and involved in the production of cholesterol.

Squalene's structure makes it unstable. In 1950, Squalene was converted to Squalane by hydrogenation making it a stable ingredient.

Squalane was first obtained from animals but a need for a renewable resource was critical. Vantage™ offers Squalane derived from sugarcane.

Squalane is commonly used as an emollient in known to reduce trans-epidermal water loss (TEWL) or prevent moisture loss, and to restore the skin's barrier.

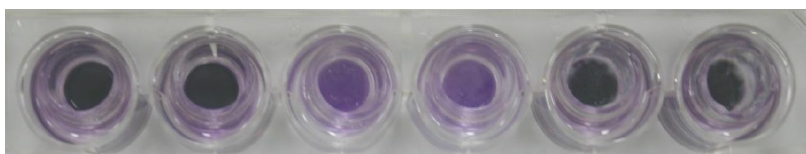
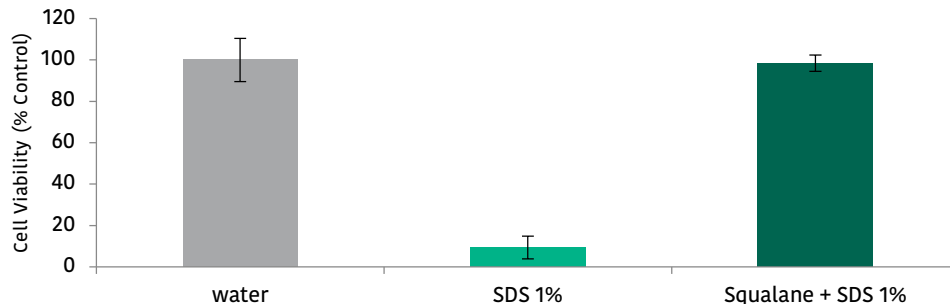
Korać RR, Khambholja KM. Potential of herbs in skin protection from ultraviolet radiation. *Pharmacogn Rev.* 2011;5(10):164-173
Allison, A. Squalene and Squalane Emulsions as Adjuvants. *Methods.* 1999; 19:87-93
Anitham, T. Medicinal Plants Used in Skin Protection. *Asian J of Pharma Clin Research.* 2012; 5(3):41-44



Defense against environmental insults & aggressors

Distinctive™ Squalane Butter 45 is able to effectively defend skin.

Protective Effect of Distinctive™ Squalane Butter 45 on the SDS-Induced Loss of Cell Viability



Method

Cells: EpiDerm™
Method: MTT Assay
Tested: SDS 1% vs Distinctive™
Squalane Butter 45 (25mg) + SDS 1%
Control: Water

All data, including the formulations and procedures discussed herein, to the knowledge of Vantage™, are believed to be correct, reliable and accurate. Please note, however, that Vantage™ does not warrant or guarantee any accuracy, reliability or completeness of the information contained herein. It is the user's responsibility to determine the suitability and completeness of such information for the user's particular use (including performing any necessary confirmatory tests). Vantage™ is not responsible or liable for any loss or damage that may occur from the use of this information, nor do we warrant against any patent infringement. Nothing contained herein shall be construed as providing any permission, recommendation, or inducement to practice any patented invention without permission of the patent owner.

061220


www.vantagegrp.com